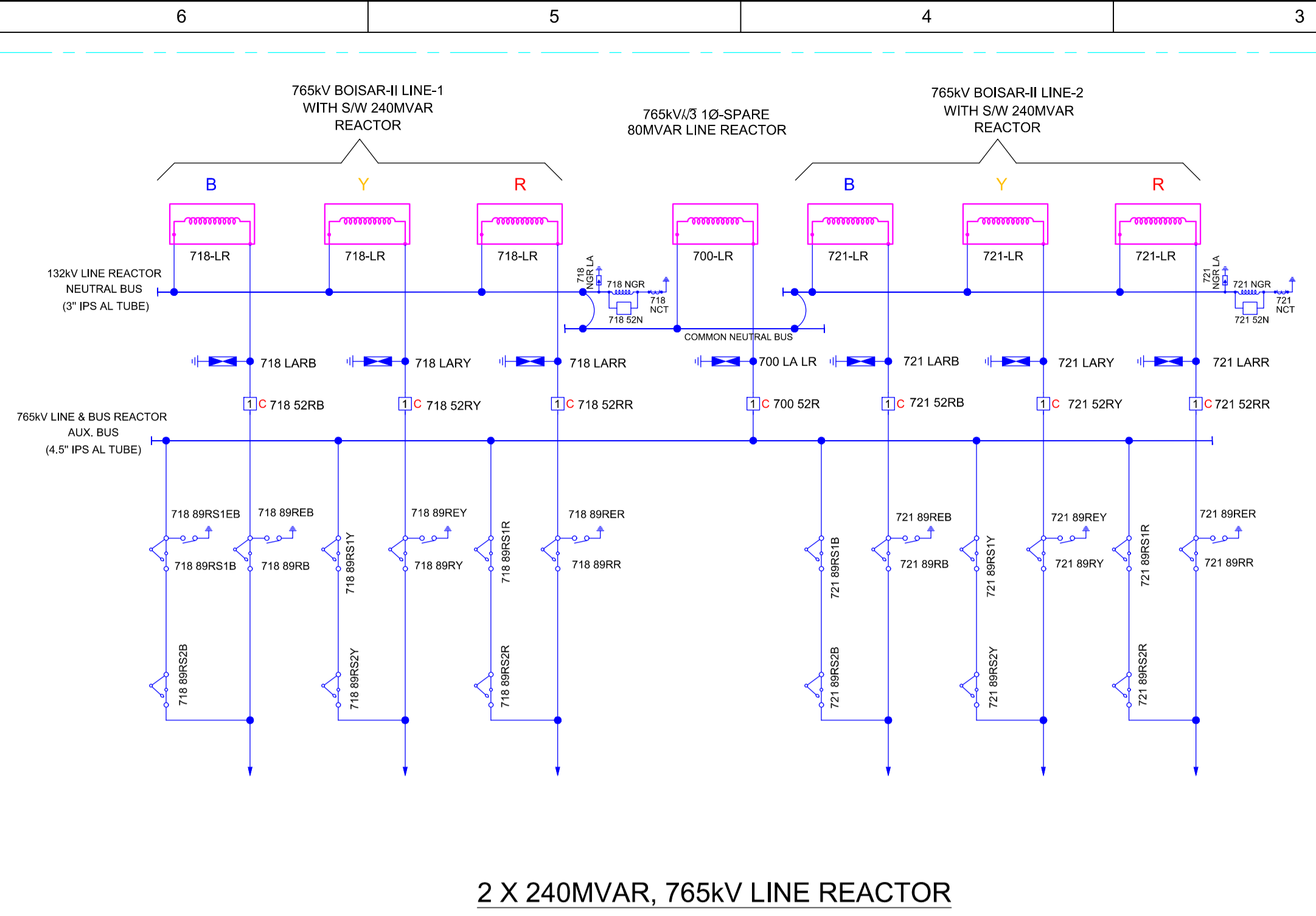
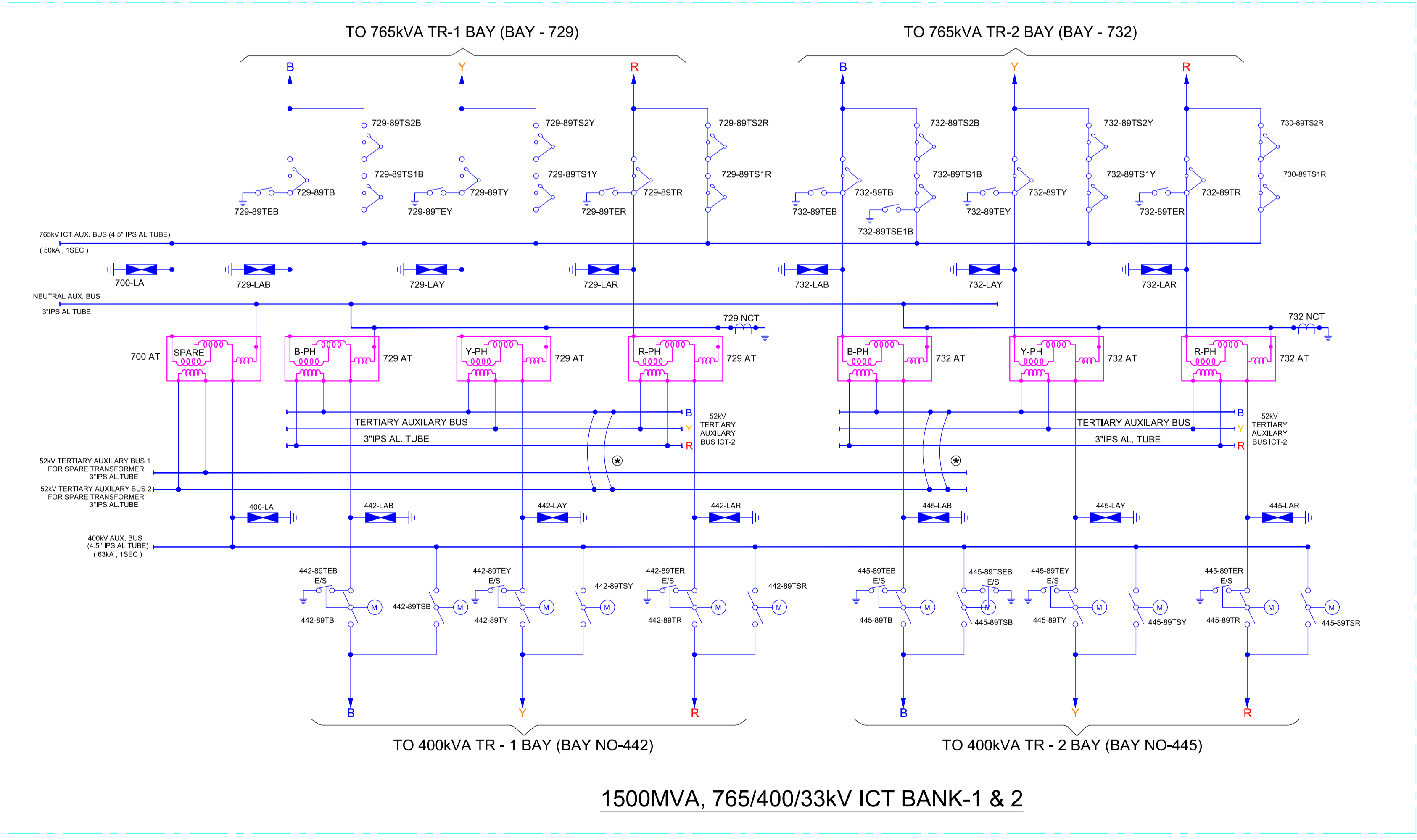
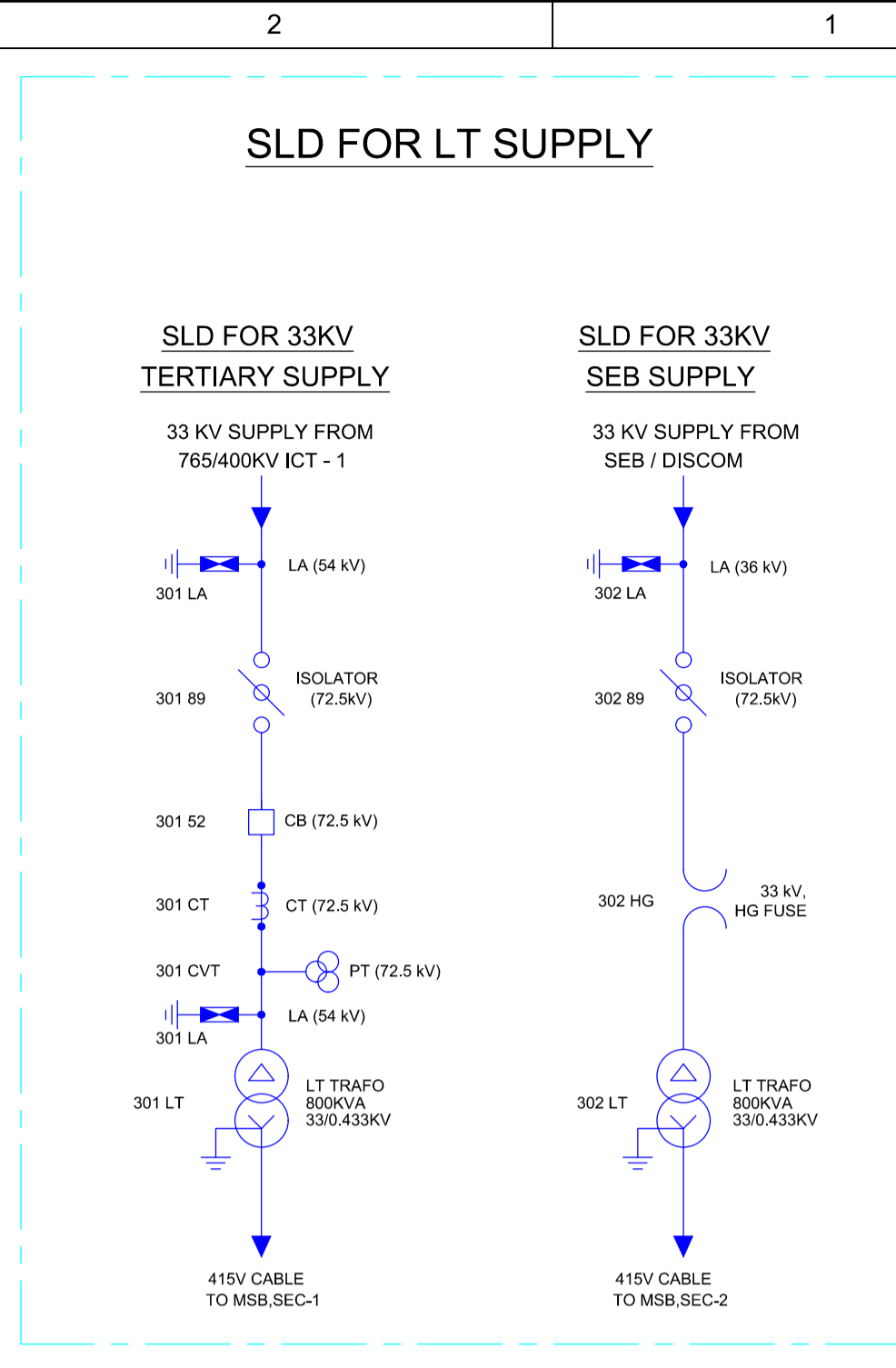


2 X 330MVAR, 765kV BUS REACTOR



2 X 240MVAR, 765kV LINE REACTOR



1500MVA, 765/400/33kV ICT BANK-1 & 2

72.5kV CT (50A) CORE DETAILS : (TABLE-IIF)  
WITH 120% EXTENDED CURRENT RATING  
( FOR LT TRAF)

CORE NO	APPLICATION	CURRENT RATIO	OUTPUT BURDEN(VA)	ACCURACY CLASS
01	OC & EF	50/1	10	5P10
02	METERING	50/1	10	0.2S
03	METERING	50/1	10	0.2S

NEUTRAL CT FOR BANK OF 765kV, 1-PH TRANSFORMER (TABLE - IIG):

CORE NO	APPLICATION	CURRENT RATIO	OUTPUT BURDEN(VA)	ACCURACY CLASS	MIN. KNEE POINT VOLT. (V)	MAX. CT S.W.R (ohm)	MAX. EXCITING CURRENT AT KP (mA)
01	REF (HIGH IMPEDANCE)	3000 / 1	-	PX	3000 V	12	20 on 3000/1 TAP

NEUTRAL CT FOR BANK OF 765kV, 1-PH REACTOR (TABLE - IIH):

CORE NO	APPLICATION	CURRENT RATIO	OUTPUT BURDEN(VA)	ACCURACY CLASS	MIN. KNEE POINT VOLT. (V)	MAX. CT S.W.R (ohm)	MAX. EXCITING CURRENT AT KP (mA)
01	EARTH FAULT PROTECTION	300 / 1	-	PX	300 V	1	40 on 300/1 TAP

72.5kV VT CORE DETAILS (TABLE - IE):

PARTICULARS	SECONDARY-1	SECONDARY-2	APPLICATION
RATED SECONDARY VOLTAGE (V)	110/√3	110/√3	
APPLICATION	PROTECTION	METERING	
ACCURACY	3P	0.5	
OUTPUT BURDEN(MIN)	10 VA	10 VA	
VOLTAGE RATIO	33 / (0.11/√3)	33 / (0.11/√3)	TERTIARY

**LEGENDS:**

- PRESENT SCOPE
- - - FUTURE SCOPE
- NOT IN SCOPE OF TEECL

- NOTES:**
- SUPPLY, ERECTION, TESTING & COMMISSIONING OF 500 MVA, (765/√3)/(400/√3)/33KV, SINGLE PHASE AUTO TRANSFORMERS ARE NOT IN UNDER SCOPE OF M/S TEECL.
  - SUPPLY, ERECTION, TESTING & COMMISSIONING OF 80MVAR & 110 MVAR, 765/√3 KV, SINGLE PHASE LINE AND BUS REACTOR ARE NOT IN UNDER SCOPE OF M/S TEECL.
  - ALL MANUAL JUMPERING FOR 145KV NEUTRAL OF REACTOR BANK, 33KV NEUTRAL & 66KV TERTIARY OF ICT SHALL BE TWIN CONDUCTOR.

REV.	DATE	REMARKS	APPROVAL CAT.	DATE	ISSUED FOR CONSTRU.
0	22.06.26	FIRST SUBMISSION			

CLIENT: WRNES TALEGAON POWER TRANSMISSION LTD.

EPC: **TECHNO ELECTRIC & ENGG. CO. LTD.**  
ENGINEERS & CONSTRUCTORS  
KOLKATA, INDIA.

LOA NO. LOA/KALAMB/TECHNO/SS/01/25 DATED: 14.08.2025  
LOA/KALAMB/TECHNO/SS/02/25 DATED: 14.08.2025

SUBSTATION: 765/400/220KV AIS SUBSTATION AT KALAMB

TITLE: SINGLE LINE DIAGRAM

TECHNO DWG. NO. 0827KA\_WTP1L\_SWYD\_E\_DRG\_41\_001

DRAWN BY: P.P.	CHECKED BY: S.J.
APPROVED BY: B.R.	SCALE: NTS

SHEET NO. 02 / 02

# HVDC AREA

